



TITAN COMPANY FORMATIONS

V 1.1

## **LEGIO TITANICUS GENERAL RULES**

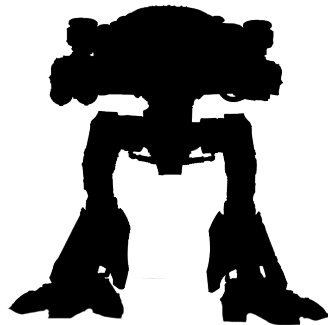
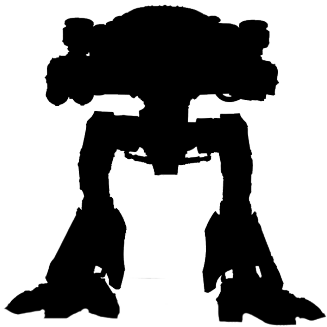
**(FACTION VALUE NONE)**

**Army to Hit Value is: 5+**

There is no faction value for titans. All ability is calculated into their cost already.

# WARHOUND MANIPLE

The Warhound Maniple consists of 3 Warhound Titans.



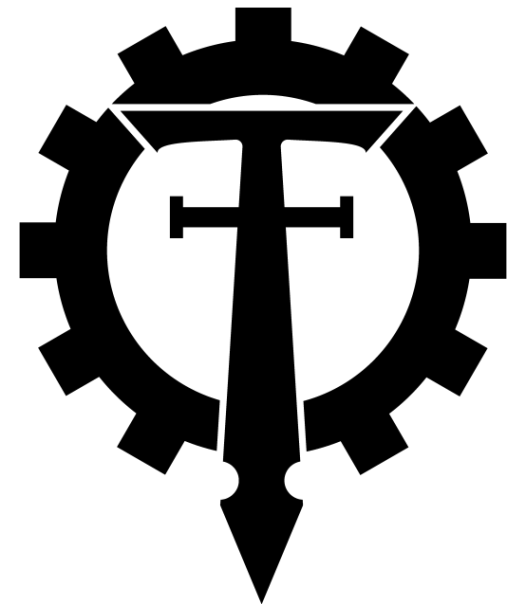
Point Value 1200

# WARHOUND MANIPLE

**Break Point** -: Per Engine

**Morale Value** -: Titans do not check for Morale they pass all morale tests automatically.

| Type                 | Move | AV | CAF  | Power Value | DR | Shields | Weapons Load | Cost       |
|----------------------|------|----|------|-------------|----|---------|--------------|------------|
| Warhound Scout Titan | 25   | 2+ | 6/-4 | 10          | 4  | 2       | 2            | 400<br>4VP |

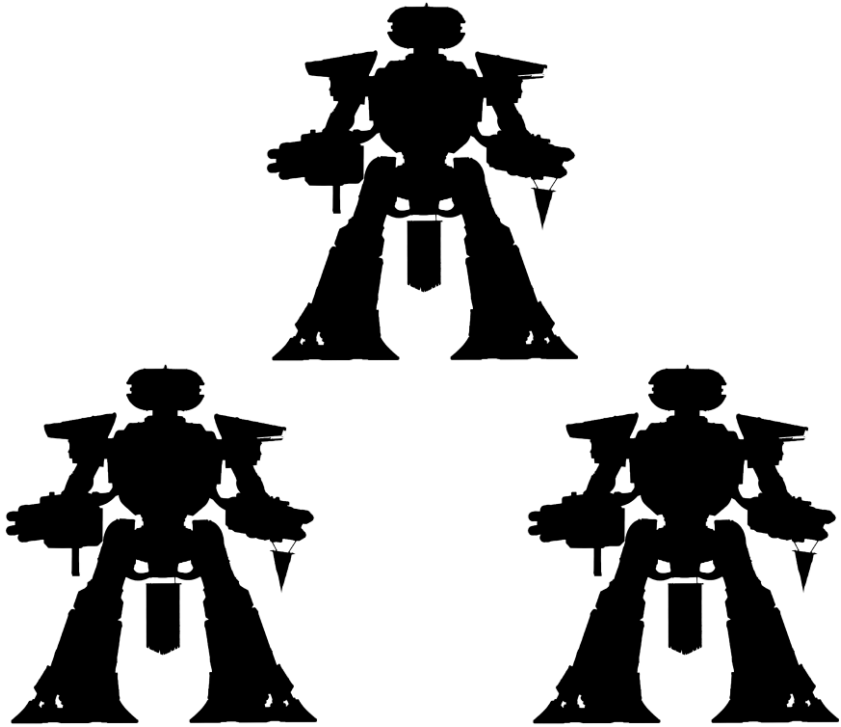


Victory Points 12

Your opponent gains - 4VP for each Engine destroyed

# REAYER MANIPLE

The Reaver Maniple consists of 3 Reaver Titans.



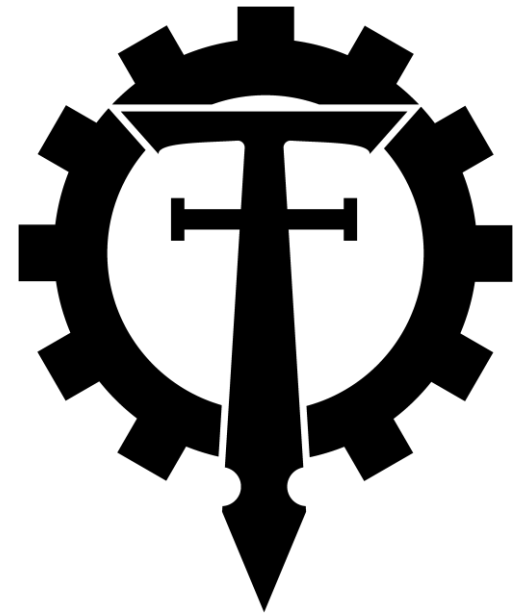
Point Value 2250

# REAYER MANIPLE

**Break Point** -: Per Engine

**Morale Value** -: Titans do not check for Morale they pass all morale tests automatically.

| Type         | Move | AV | CAF   | Power Value | DR | Shields | Weapons Load | Cost       |
|--------------|------|----|-------|-------------|----|---------|--------------|------------|
| Reaver Titan | 20   | 1+ | 12/-5 | 20          | 8  | 4       | 3            | 750<br>8VP |

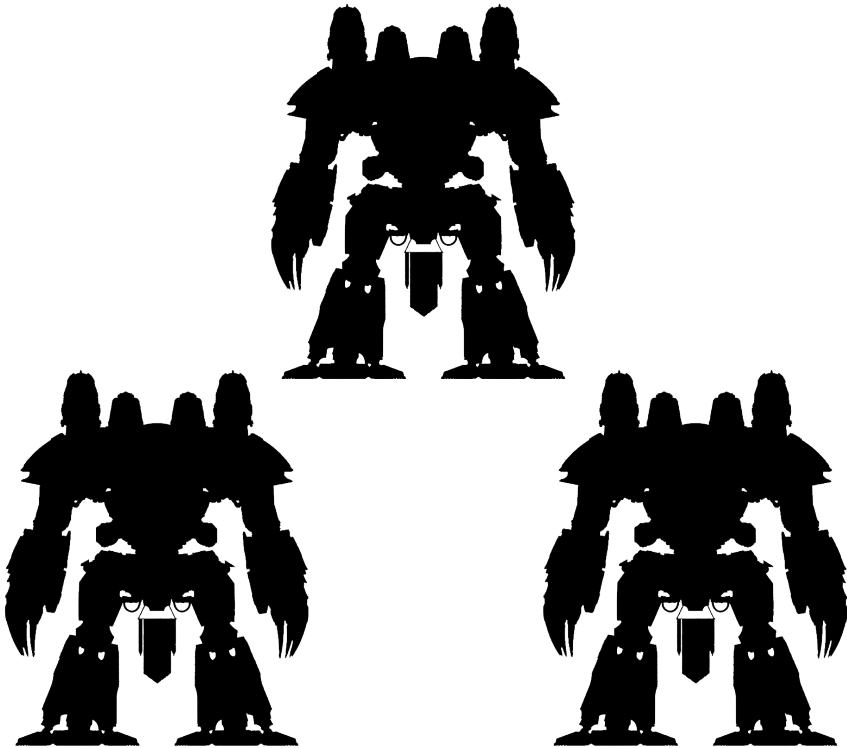


Victory Points 24

Your opponent gains - 8VP per Engine destroyed

# WARLORD MANIPLE

The Warlord Maniple consists of 3 Warlord Titans.



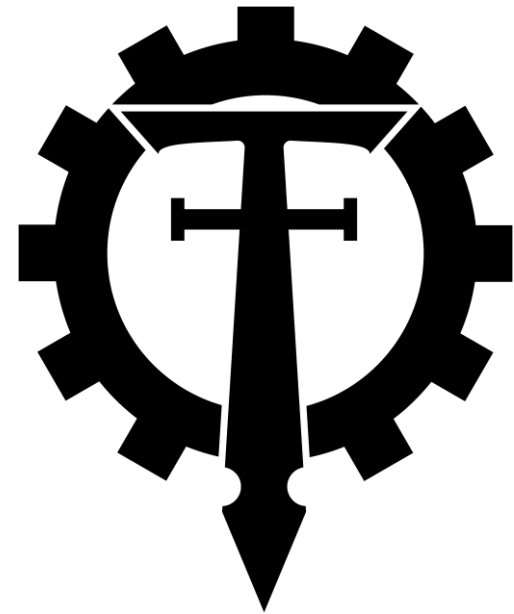
Point Value 3600

# WARLORD MANIPLE

**Break Point** -: Per Engine

**Morale Value** -: Titans do not check for Morale they pass all morale tests automatically.

| Type                       | Move | AV | CAF   | Power Value | DR | Shields | Weapons Load | Cost         |
|----------------------------|------|----|-------|-------------|----|---------|--------------|--------------|
| Mars Alpha Pattern Warlord | 15   | 1+ | 16/-5 | 28          | 12 | 6       | 4            | 1200<br>12VP |

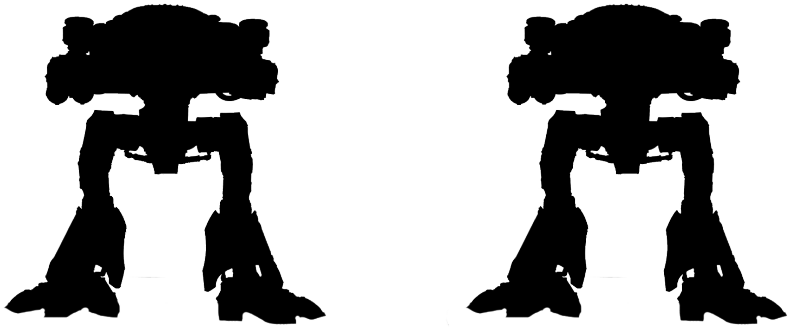


Victory Points 36

Your opponent gains - 12VP per Engine destroyed

# WARHOUND MANIPLE

The Warhound Maniple consists of 2 Warhound Titans.



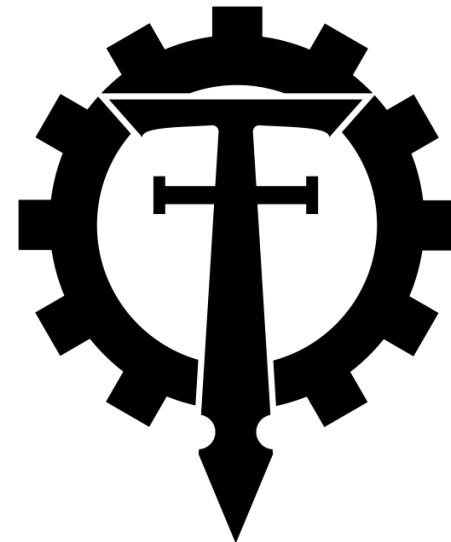
Point Value 800

# WARHOUND MANIPLE

**Break Point** -: Per Engine

**Morale Value** -: Titans do not check for Morale they pass all morale tests automatically.

| Type                 | Move | AV | CAF  | Power Value | DR | Shields | Weapons Load | Cost       |
|----------------------|------|----|------|-------------|----|---------|--------------|------------|
| Warhound Scout Titan | 25   | 2+ | 6/-4 | 10          | 4  | 2       | 2            | 400<br>4VP |



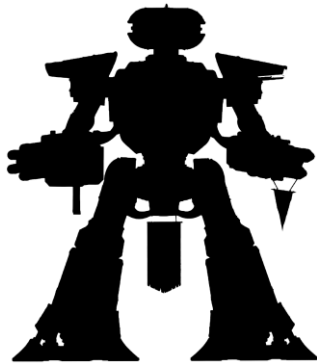
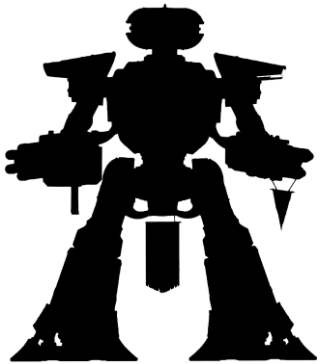
---

**Victory Points 8**

Your opponent gains - 4VP for each Engine destroyed

## REAYER MANIPLE

The Reaver Maniple consists of 2 Reaver Titans.



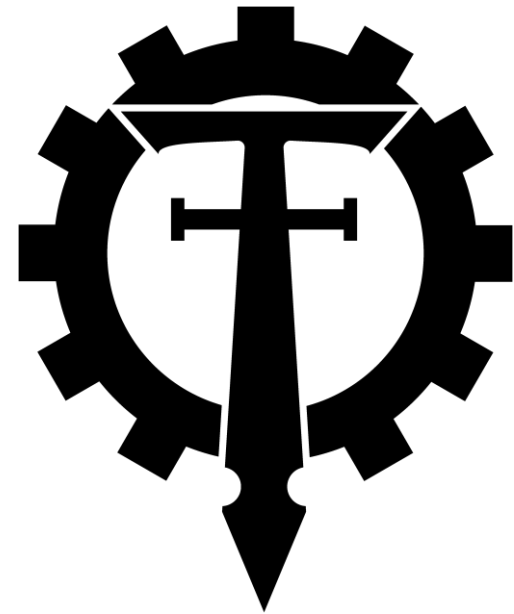
Point Value 1500

## REAYER MANIPLE

**Break Point** -: Per Engine

**Morale Value** -: Titans do not check for Morale they pass all morale tests automatically.

| Type         | Move | AV | CAF   | Power Value | DR | Shields | Weapons Load | Cost       |
|--------------|------|----|-------|-------------|----|---------|--------------|------------|
| Reaver Titan | 20   | 1+ | 12/-5 | 20          | 8  | 4       | 3            | 750<br>8VP |

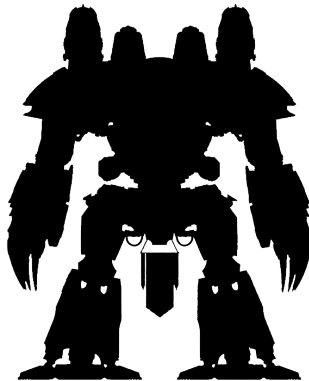
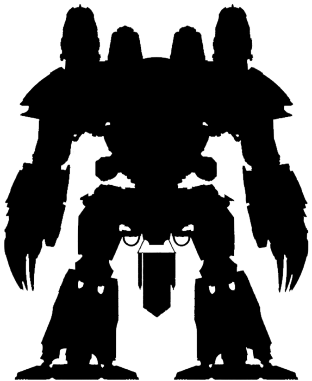


Victory Points 16

Your opponent gains - 8VP per Engine destroyed

# WARLORD MANIPLE

The Warlord Maniple consists of 2 Warlord Titans.



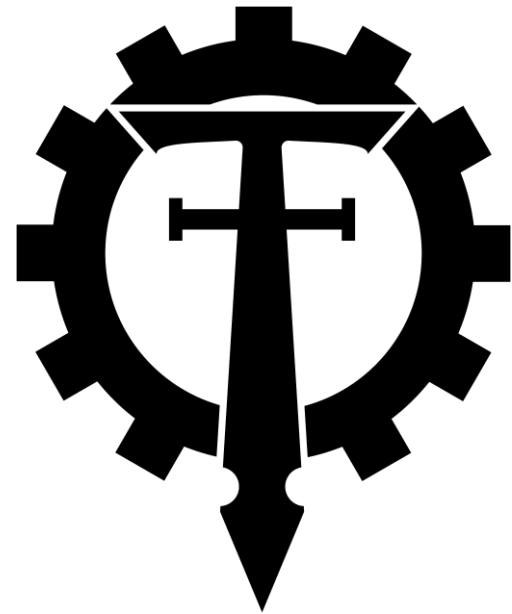
Point Value 2400

# WARLORD MANIPLE

**Break Point** -: Per Engine

**Morale Value** -: Titans do not check for Morale they pass all morale tests automatically.

| Type                       | Move | AV | CAF   | Power Value | DR | Shields | Weapons Load | Cost         |
|----------------------------|------|----|-------|-------------|----|---------|--------------|--------------|
| Mars Alpha Pattern Warlord | 15   | 1+ | 16/-5 | 28          | 12 | 6       | 4            | 1200<br>12VP |



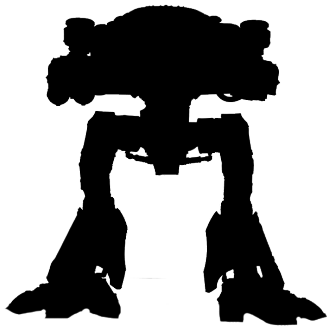
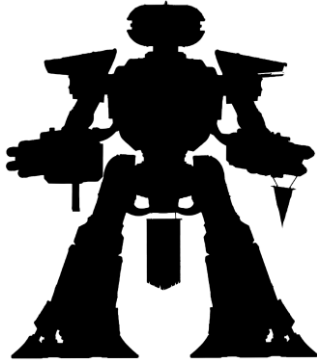
Victory Points 24

Your opponent gains - 12VP per Engine destroyed



# STRIKE MANIPLE

The Strike Maniple consists of 1 Reaver Titan and 2 Warhound Titans.



Point Value 1550

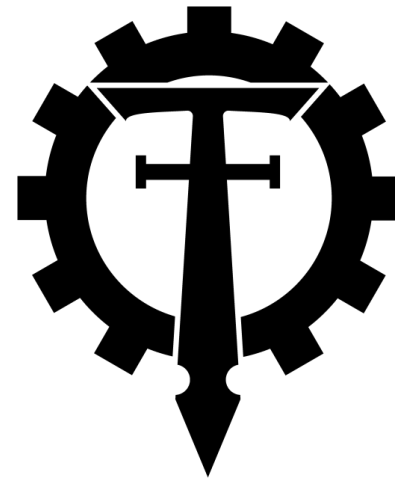
# STRKE MANIPLE

**Break Point** -: Per Engine

**Morale Value** -: Titans do not check for Morale they pass all morale tests automatically.

| Type         | Move | AV | CAF   | Power Value | DR | Shields | Weapons Load | Cost       |
|--------------|------|----|-------|-------------|----|---------|--------------|------------|
| Reaver Titan | 20   | 1+ | 12/-5 | 20          | 8  | 4       | 3            | 750<br>8VP |

| Type                 | Move | AV | CAF  | Power Value | DR | Shields | Weapons Load | Cost       |
|----------------------|------|----|------|-------------|----|---------|--------------|------------|
| Warhound Scout Titan | 25   | 2+ | 6/-4 | 10          | 4  | 2       | 2            | 400<br>4VP |

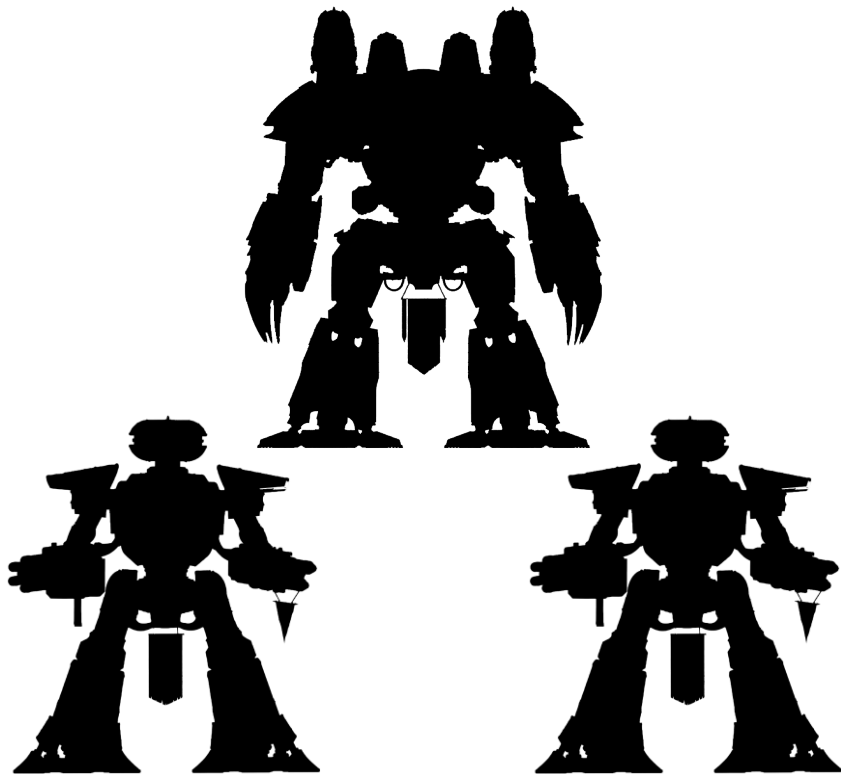


**Victory Points 16**

Your opponent gains - 4VP per Warhound and 8VP per Reaver Engine destroyed

## BATTLE MANIPLE

The Battle Maniple consists of 1 Warlord Titan and 2 Reaver Titans.



Point Value 2700

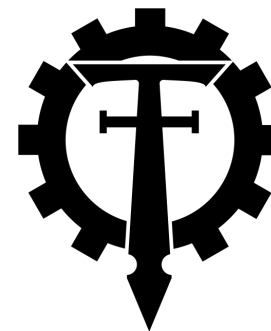
## BATTLE MANIPLE

**Break Point** -: Per Engine

**Morale Value** -: Titans do not check for Morale they pass all morale tests automatically.

| Type                       | Move | AV | CAF   | Power Value | DR | Shields | Weapons Load | Cost         |
|----------------------------|------|----|-------|-------------|----|---------|--------------|--------------|
| Mars Alpha Pattern Warlord | 15   | 1+ | 16/-5 | 28          | 12 | 6       | 4            | 1200<br>12VP |

| Type         | Move | AV | CAF   | Power Value | DR | Shields | Weapons Load | Cost       |
|--------------|------|----|-------|-------------|----|---------|--------------|------------|
| Reaver Titan | 20   | 1+ | 12/-5 | 20          | 8  | 4       | 3            | 750<br>8VP |



Victory Points 28

Your opponent gains - 12VP per Warlord and 8VP per Reaver Engine destroyed